



## *Adding Quality to Life*

As one of the Twin Cities' premier communities, Plymouth is home to 78,000 residents and more than 60,000 jobs. Crossed and bordered by major highways, residents and businesses benefit from big city amenities in a well-planned, highly regarded community.

Many attributes draw residents to Plymouth – strong neighborhoods, excellent schools, extensive trails, picturesque parks, diverse recreation programming, nearby shopping and entertainment districts, and easy access to downtown Minneapolis and St. Paul.

Plymouth cultivates a vibrant, business-friendly environment. City leaders take pride that Plymouth is a med-tech leader in Minnesota, a state that is at the forefront of the industry worldwide. Thanks to a diverse tax base, Plymouth has one of the lowest tax rates in the state. City leaders understand what industry needs – great location, a robust transportation system and a leading value for tax dollars.

Seeking:  
**Plymouth  
Creek  
Center  
Manager**

[plymouthmn.gov](http://plymouthmn.gov)



## Plymouth Creek Center Campus Annual Numbers\*

**Square Feet:**  
30,000 - growing to 110,000

**PCC Budget:**  
\$753,637 (General fund)

**Visitors:** 300,000+

**Reservations:** 14,500

**Events:** 90+ state-wide training,  
wedding, corporate events

**Field House Budget:**  
\$416,300 (Enterprise fund)

**Field House Hours:** 1,964

\*pre expansion

# CITY OF PLYMOUTH

Enhancing Plymouth's highly valued quality of life drives city staff. Plymouth has five full-service departments with 260 regular employees, 80 paid on-call firefighters and 300 temporary and seasonal employees. Whether building new roads, providing public safety services or developing parks and trails, city staff aims to offer a good value for tax dollars while delivering quality services, programs and amenities.

## Committed to Parks & Recreation Excellence

In the last three years, the City of Plymouth has completed more than \$20 million in parks and recreation work projects. In 2020, the City will complete \$56 million in projects – most notable are the Northwest Greenway Trail Head and Challenge Course, Bocce Ball Courts and the renovation and expansion of the Plymouth Creek Center (PCC).

The soon-to-be-complete \$52 million Plymouth Creek Center project will ensure that the 20-year-old facility will meet the community and regional needs for the foreseeable future. The PCC project will renovate the 30,000 square foot building that includes a 350 capacity ballroom. Another 80,000 square feet will be added onto the building for the following new amenities: an indoor walking track, a 7,000 square foot indoor playground, two gymnasiums, three fitness rooms, senior rooms, multi-purpose rooms, two party rooms, a youth room, art gallery, staff offices and additional auxiliary spaces.

The project design has been established and architects are nearing completion of the final construction plans. This project will go before the City Council for bid authorization in July/August 2020, with construction tentatively scheduled for August/September 2020. The project will be completed fall of 2022.

## Financial Strength

Plymouth has a strong tradition of sound financial management. That sustained focus has allowed the city to invest in public infrastructure and amenities with minimal impact to taxpayers. Plymouth is one of about a dozen Minnesota cities that holds AAA bond ratings – the highest possible – from both Moody's Investors Services and Standard & Poor's.

## Plymouth Creek Center Manager

Plymouth is seeking a collaborative leader – someone who is committed to fostering a cross-functional culture that ensures teamwork, innovation, and productivity. The Plymouth Creek Center manager oversees the campus which includes the Community Center, Fieldhouse, Millennium Garden, and Historical Society Building. This position has administrative oversight of the budgets, maintenance, rentals and scheduling, records/asset management, marketing strategies, and supervision of five full-time staff and numerous seasonal/part-time staff.

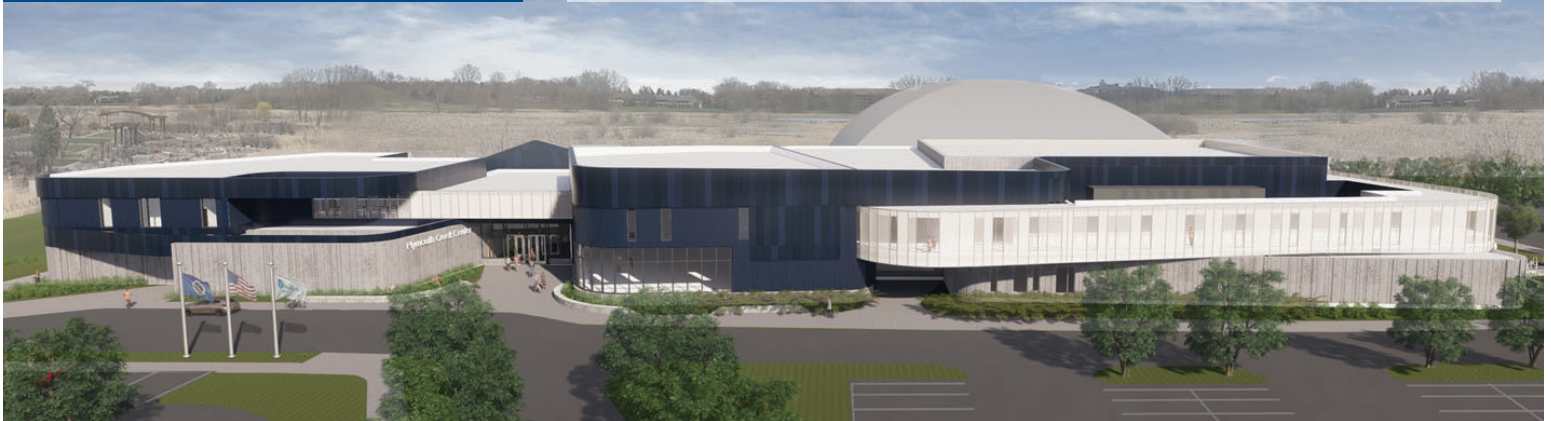
The PCC manager serves as a member of the Park & Recreation Director's leadership team which also includes the Deputy Director, P&F Manager, Recreation Manager, Plymouth Ice Center Manager and Volunteer Coordinator. This group places a premium on collaboration, teamwork and innovation.

The city will accept applications for this position through April 17, 2020 - 8:00am. Pay range is \$87,264 to \$112,358, depending on qualifications. For more information on position requirements, please visit [plymouthmn.gov](http://plymouthmn.gov).



# Plymouth Creek Center Project

On Sept. 10, 2020 the Plymouth City Council approved the proposed schematic and architectural design for the Plymouth Creek Center Renovation and Expansion Project. City Council also authorized proceeding with design development and construction documents.



## Background

The Plymouth Creek Center Renovation and Expansion Project began in 2016 with a feasibility study and progressed to a year-long community engagement process in 2018.

During the past three years, information has been presented, shared or received at nine Council meetings, 10 study sessions, five special events, four open houses, two Flash Vote surveys, Social Pinpoint, seven Plymouth News articles and a special edition of the Plymouth News mailed to all Plymouth addresses.

The project cost estimate is \$51.6 million, which includes an estimated \$8.7 million for needed maintenance and renovation of the existing building. The city is seeking \$15 million in state bond funds and other offsetting revenues to help pay for the project. Project completion is estimated for September of 2022.



## TIMELINE

- **2016-2017**  
Feasibility Study
- **2018**  
Community Engagement
  - Open Houses (3)
  - Events (5)
  - FlashVote
  - Social Pinpoint
- **2019**  
Schematic Design  
Open Houses  
FlashVote/Public Feedback
- **2020-2022**  
Potential Construction

## AMENITIES

*Proposed amenities and program opportunities:*

- Gymnasiums
- Walking Track
- Indoor Playground
- Senior/Adult Spaces
- Multipurpose Rooms
- Fitness/Wellness Studios
- Art Rooms
- Art Gallery
- Common Space
- Dance Studio
- Party Rooms
- Music Rooms
- Renovated Ballroom
- Redesigned Black Box Theater

The floor plan illustrates the University of North Carolina at Chapel Hill Student Center, a large, multi-functional building. Key features include:

- Amphitheater:** A large, circular outdoor performance space with tiered seating and a stage.
- Multipurpose Rooms:** Several large, flexible spaces for various activities, including a large multipurpose room with a stage and a smaller multipurpose room.
- Theater:** A dedicated space for theatrical performances, featuring a stage and audience seating.
- Classrooms and Lecture Halls:** Numerous rooms for instruction, including a large lecture hall and several smaller classrooms.
- Offices and Administrative Spaces:** A central area containing various offices, including a large office and a reception area.
- Library and Study Areas:** A dedicated space for students to study and access library resources.
- Fitness Center:** A large room for physical activity and exercise.
- Support Spaces:** Various rooms for building maintenance and operations, including storage, restrooms, and a loading dock.
- Outdoor Spaces:** A green lawn area and a small outdoor theater for outdoor events.

The plan also shows the building's connection to the surrounding campus, including a parking lot and a green lawn area.