

EXISTING PLAN SYMBOLS

PROPERTY LINES/RIGHT-OF-WAY	---
UTILITY EASEMENT	- - - -
TREE LINE	~~~~~
SIGN	+
DECIDUOUS TREE	⊗
SHRUB	⊗
CONIFEROUS TREE	⊗

EXISTING UTILITY SYMBOLS

FIBER OPTIC LINE	— F —
GAS LINE	— G —
COMMUNICATION LINE	— C —
ELECTRIC POWER LINE	— E —
WATER MAIN	— —
SANITARY SEWER	— > —
STORM SEWER	— >> —
COMMUNICATIONS PEDESTAL	⊞
POWER POLE	⊞
ELECTRIC BOX	⊞
CATCH BASIN	⊞
STORM APRON	⊞
STORM SEWER MANHOLE	⊞
GATE VALVE	⊞
HYDRANT	⊞
SANITARY SEWER MANHOLE	⊞

19TH AVENUE AND DUNKIRK LANE POND
IMPROVEMENTS
CITY OF PLYMOUTH

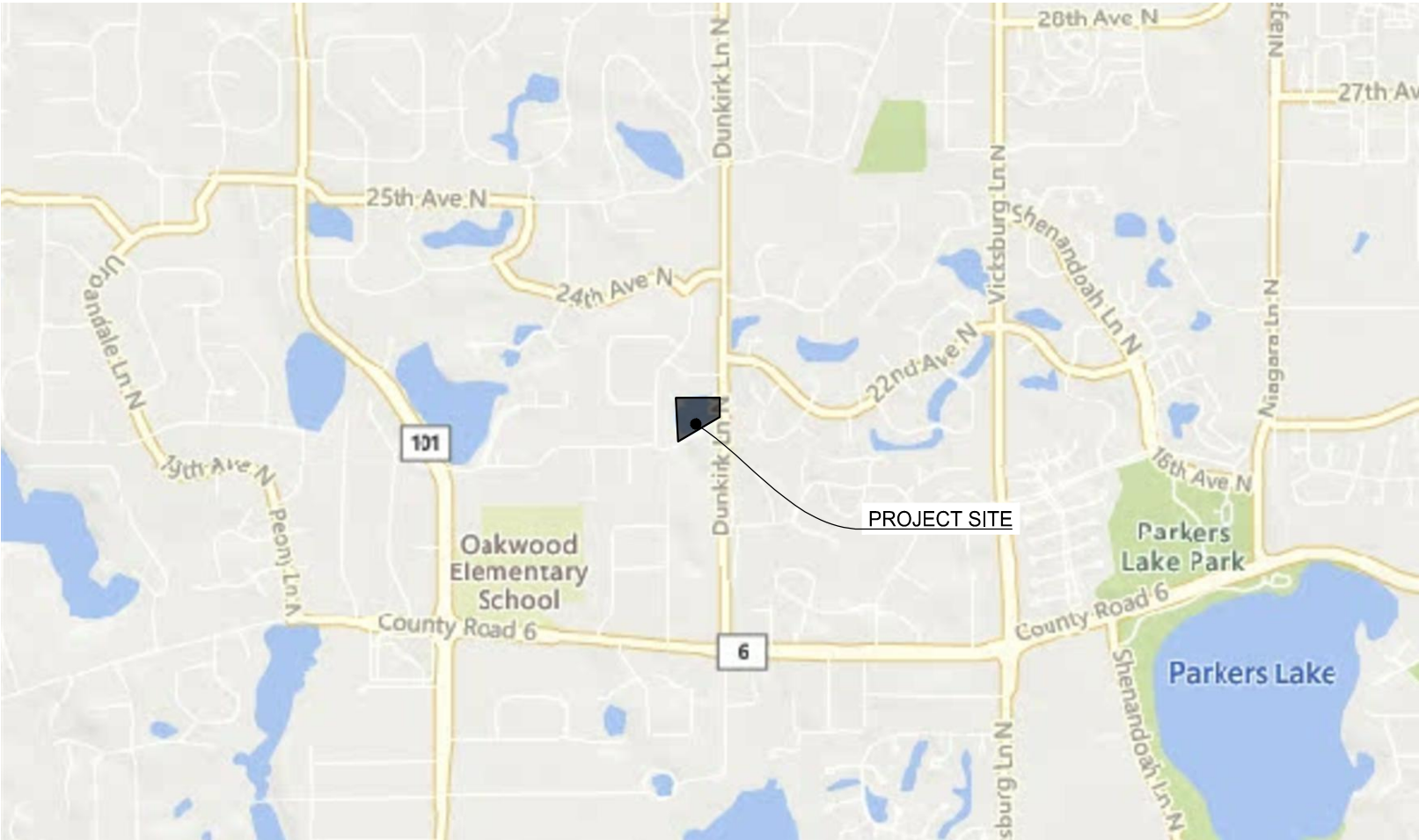
GOVERNING SPECIFICATIONS

THE 2020 EDITION OF THE MINNESOTA DEPARTMENT OF TRANSPORTATION "STANDARD SPECIFICATIONS FOR CONSTRUCTION" AND THE "SUPPLEMENTAL SPECIFICATIONS" DATED SEPTEMBER 2022 SHALL GOVERN ALONG WITH THE CITY OF PLYMOUTH ENGINEERING GUIDELINES AND STANDARD DETAIL SPECIFICATIONS DATED JAN. 2023.

ALL TRAFFIC CONTROL DEVICES SHALL CONFORM TO THE LATEST EDITION OF THE MINNESOTA MANUAL ON UNIFORM TRAFFIC CONTROL DEVICES, INCLUDING THE LATEST FIELD MANUAL FOR TEMPORARY TRAFFIC CONTROL ZONE LAYOUTS.

PLAN SET INDEX

SHEET NUMBER	SHEET TITLE
1	TITLE SHEET
2	MISCELLANEOUS DETAILS
3	MISCELLANEOUS DETAILS
4	GRADING PLAN



THIS PLAN SET CONTAINS 4 SHEETS

THIS PLAN SET HAS BEEN PREPARED FOR:

CITY OF PLYMOUTH
3400 PLYMOUTH BLVD
PLYMOUTH, MN 55447
(763) 509-5000

ALL APPLICABLE FEDERAL, STATE, AND LOCAL LAWS AND ORDINANCES WILL BE COMPLIED WITH IN THE CONSTRUCTION OF THIS PROJECT.



I HEREBY CERTIFY THAT THIS PLAN WAS PREPARED BY ME OR UNDER MY DIRECT SUPERVISION, AND THAT I AM A DULY LICENSED PROFESSIONAL ENGINEER UNDER THE LAWS OF THE STATE OF MINNESOTA.

LAURA RESCORLA, P.E.

DATE: 07/27/2023

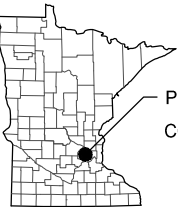
LICENSE NUMBER: 58716

WSB PROJ. NO. 022133-000
CITY PROJ. NO. WR190001

SHEET
1
OF
4

EXCAVATION NOTICE SYSTEM

A CALL TO GOPHER STATE ONE (651-454-0002) IS REQUIRED A MINIMUM OF 48 HOURS PRIOR TO PERFORMING ANY EXCAVATION.



PROJECT LOCATION
COUNTY: HENNEPIN

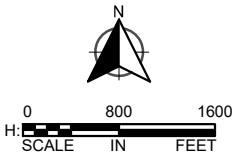
SECT 29, TWP 118N, RNG 22W

PROJECT LOCATION MAP

UTILITY INFORMATION

THE SUBSURFACE UTILITY INFORMATION IN THIS PLAN IS UTILITY QUALITY LEVEL D. THIS UTILITY QUALITY LEVEL WAS DETERMINED ACCORDING TO THE GUIDELINES OF CI/ASCE 38-02, ENTITLED "STANDARD GUIDELINES FOR THE COLLECTION AND DEPICTION OF EXISTING SUBSURFACE UTILITY DATA."

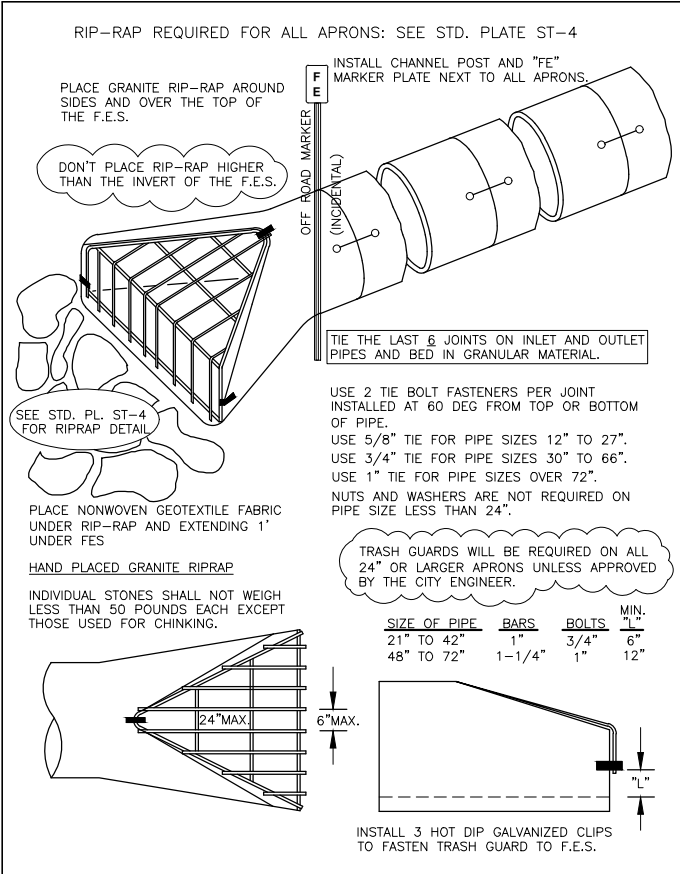
GOPHER ONE CALL TICKET NUMBER: 231433561




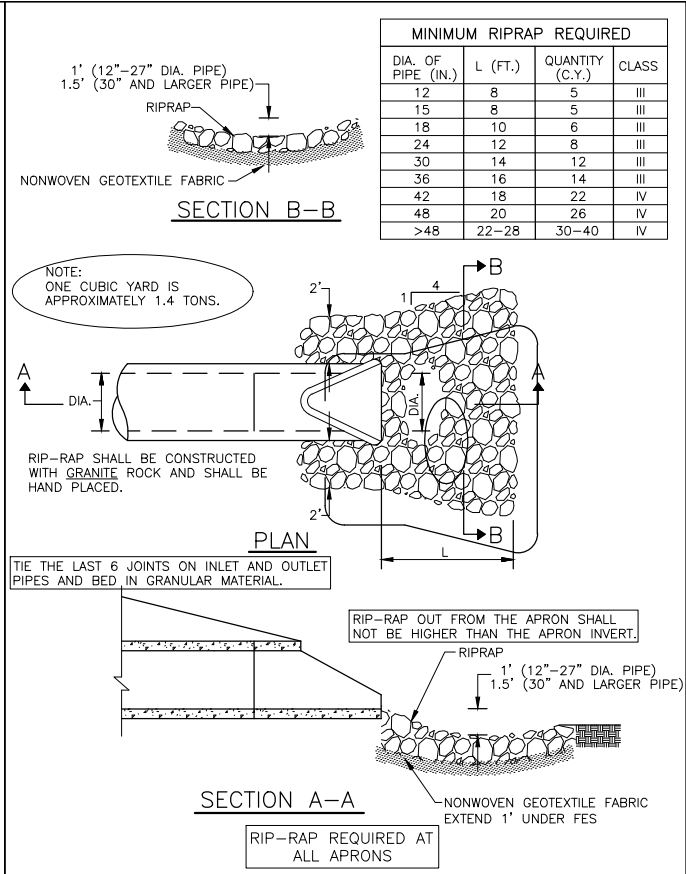
PLAN REVISIONS		
DATE	SHEET NO.	APPROVED BY


K:\022133-000\Cad\Plan\022133-000-C-TITLE-PLAN.dwg 8/1/2023 8:01:50 AM

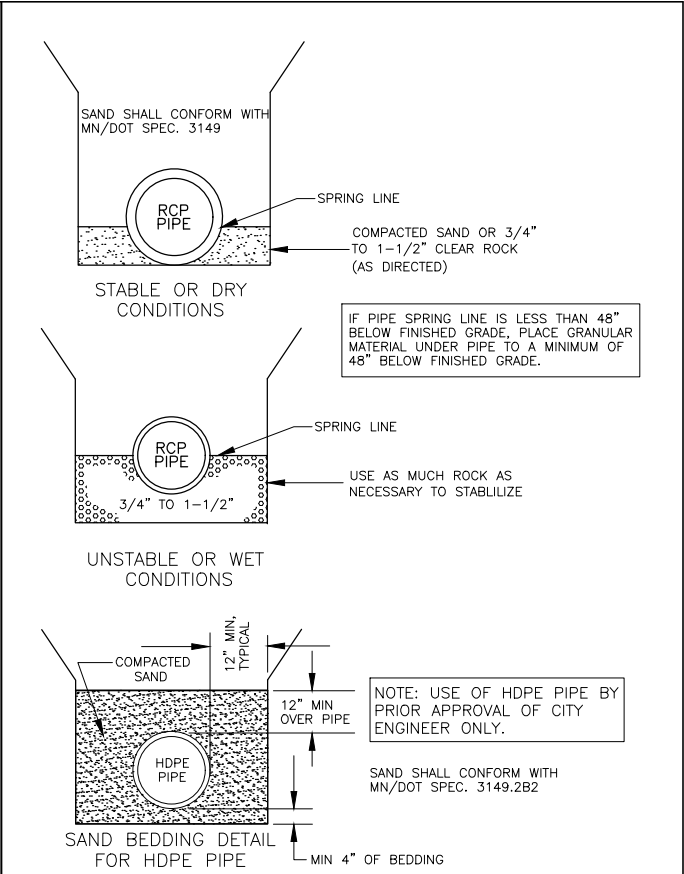
K:\022133-000\CadPlan\022133-000-MISC-DETL.dwg 8/1/2023 8:02:01 AM




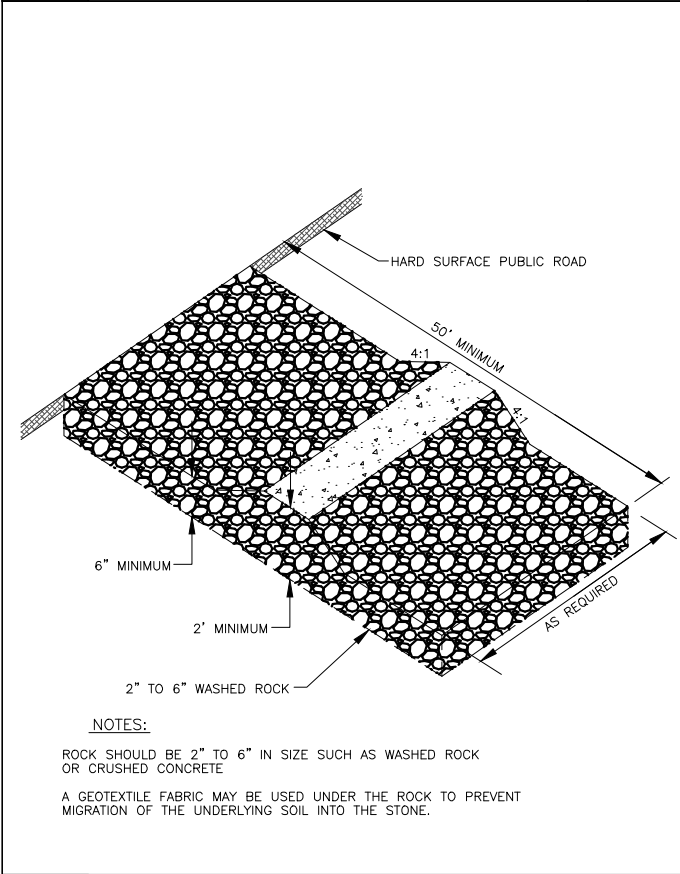
	STANDARD DETAILS		PUBLISHED
	INLET & OUTLET F.E.S. WITH TRASH GUARD		3-23
	CITY OF PLYMOUTH		CITY PL. NO. ST-3
			REVISED 1-17




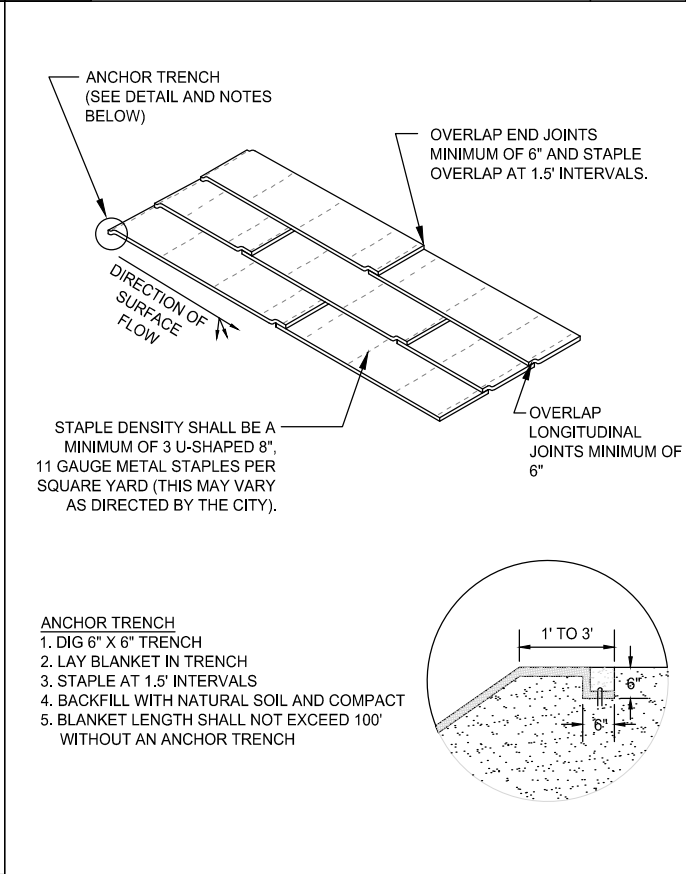
	STANDARD DETAILS		PUBLISHED
	RIPRAP DETAIL FOR FLARED END SECTIONS		3-23
	CITY OF PLYMOUTH		CITY PL. NO. ST-4
			REVISED 1-17



	STANDARD DETAILS		PUBLISHED
	STORM SEWER BEDDING		3-23
	CITY OF PLYMOUTH		CITY PL. NO. ST-8
			REVISED 3-12



	STANDARD DETAILS		PUBLISHED
	ROCK EXIT TO CONSTRUCTION SITE		3-23
	CITY OF PLYMOUTH		CITY PL. NO. ST-19
			REVISED 1-20



STANDARD DETAILS		PUBLISHED
EROSION CONTROL BLANKET INSTALLATION		3-23
CITY OF PLYMOUTH		CITY PL. NO. ST-19
		REVISED 1-20

SCALE: NOT TO SCALE

SCALE: AS SHOWN
DESIGN BY: LGR
PLAN BY: CHECK BY: JHN
SML

REVISIONS	
NO.	DESCRIPTION

I HEREBY CERTIFY THAT THIS PLAN, SPECIFICATION, OR REPORT WAS PREPARED BY ME OR UNDER MY DIRECT SUPERVISION AND THAT I AM A DULY LICENSED PROFESSIONAL ENGINEER UNDER THE LAWS OF THE STATE OF MINNESOTA.

LAURA RESCORLA
DATE: 07-27-2023 LIC. NO. 58716

MISCELLANEOUS DETAILS

19TH AVE & DUNKIRK LN POND IMPROVEMENTS
CITY OF PLYMOUTH

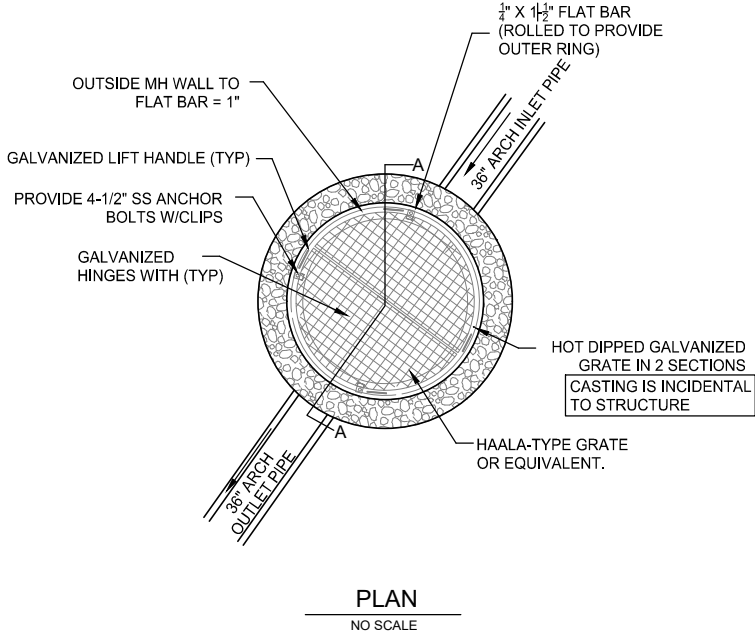
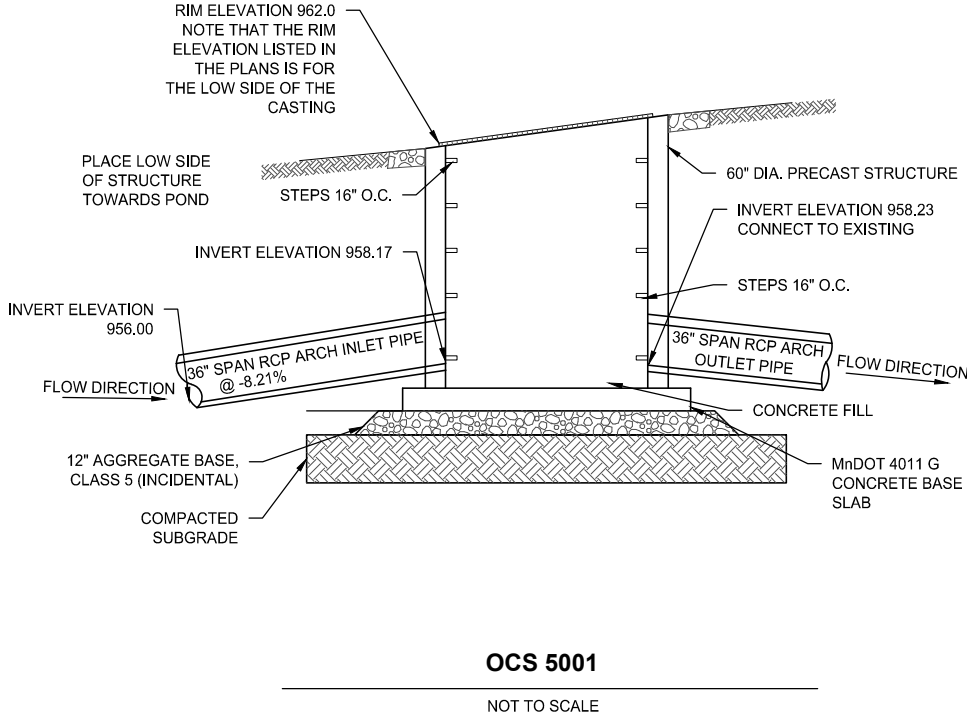
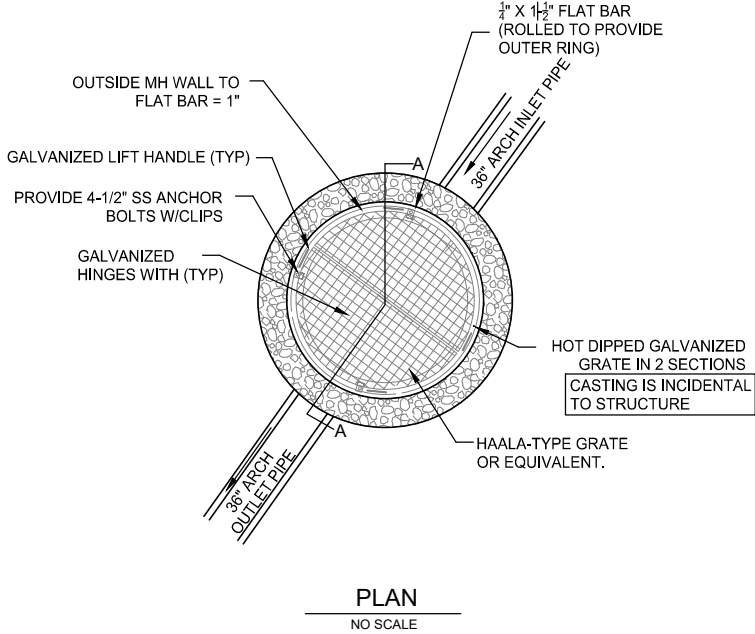
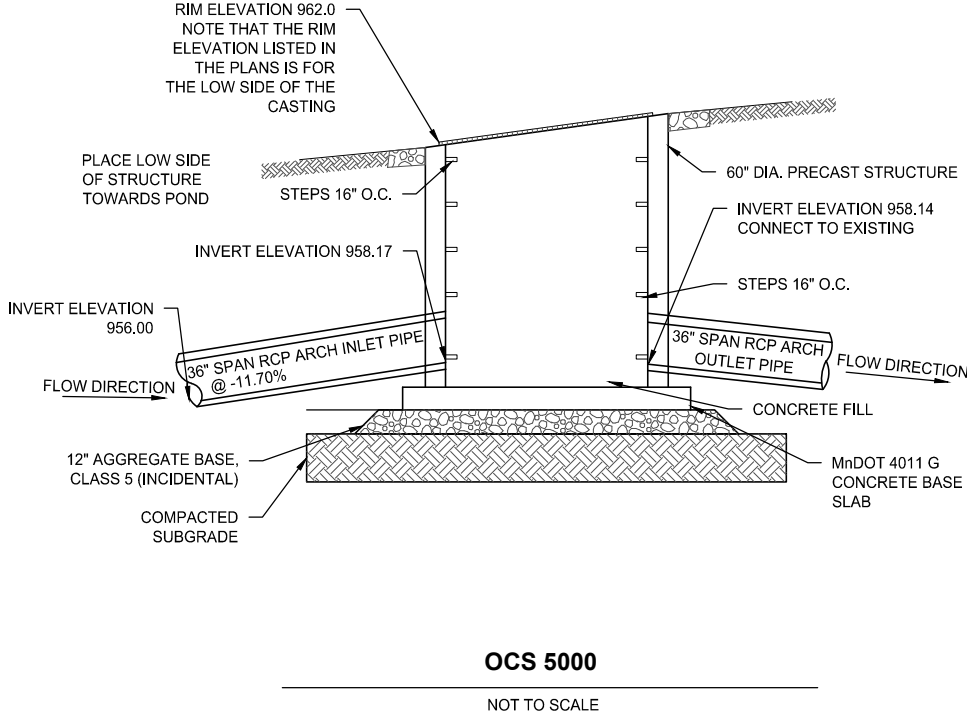
CLIENT PROJECT NO.
WR190001

WSB PROJECT NO.
022133-000

SHEET

2 OF 4

K:\022133-000\CadPlan\022133-000-MISC-DETL.dwg 8/1/2023 8:02:07 AM



REVISIONS	
NO.	DESCRIPTION

I HEREBY CERTIFY THAT THIS PLAN, SPECIFICATION, OR REPORT WAS PREPARED BY ME OR UNDER MY DIRECT SUPERVISION AND THAT I AM A DULY LICENSED PROFESSIONAL ENGINEER UNDER THE LAWS OF THE STATE OF MINNESOTA.

LAURA RESCORLA
DATE: 07-27-2023 LIC. NO. 58716

MISCELLANEOUS DETAILS

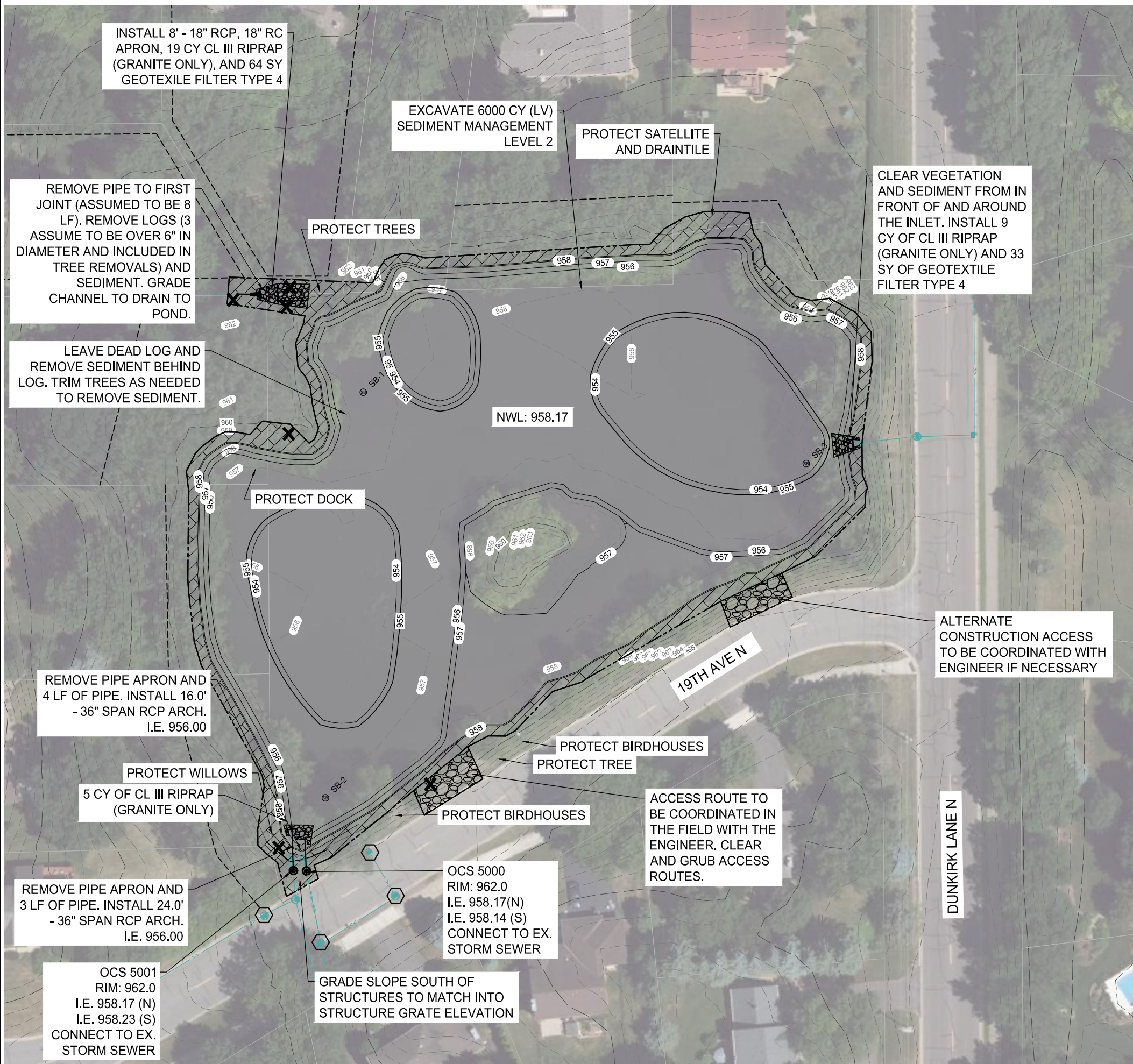
19TH AVE & DUNKIRK LN POND IMPROVEMENTS
CITY OF PLYMOUTH

CLIENT PROJECT NO.
WR190001

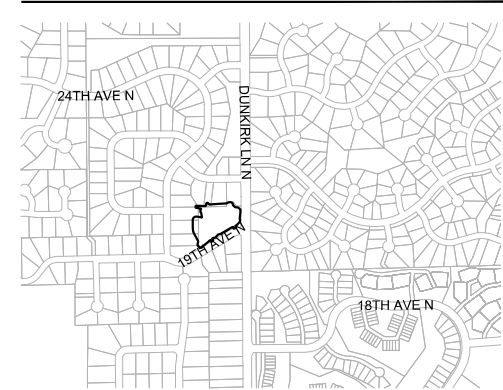
WSB PROJECT NO.
022133-000

SHEET
3 OF 4

K:\022133-000\CadPlan\022133-000-CC-GRAD-PLAN.dwg 8/1/2023 5:02:22 AM



LOCATION



0 30 60
H. SCALE IN FEET

LEGEND

- INLET PROTECTION
- CLASS III RIPRAP (GRANITE ONLY)
- PARCEL LINE
- EASEMENT LINE
- APPROX. CONSTRUCTION LIMITS
- STABILIZED CONSTRUCTION ENTRANCE. UNLESS OTHERWISE NOTED, RESTORE USING SEED MIX 25-131 (220 LBS/ACRE) WITH FERTILIZER TYPE 3 (350 LBS/ACRE) & TYPE 3 MULCH (2 TONS/ACRE) WITH DISC ANCHOR.
- SEED MIX 33-261 (35 LBS/ACRE) WITH FERTILIZER TYPE 4 (150LBS/ACRE), SEED MIX 21-111 (100 LBS/ACRE), & CATEGORY 20 ROLLED EROSION PREVENTION PRODUCT. TEMPORARY STABILIZATION: TYPE 3 MULCH WITH DISC ANCHOR
- EXISTING CONTOUR (MAJOR)
- EXISTING CONTOUR (MINOR)
- PROPOSED CONTOUR (MAJOR)
- PROPOSED CONTOUR (MINOR)
- EXISTING STORM SEWER PIPE
- PROPOSED STORM SEWER PIPE
- EXISTING STORM STRUCTURE
- PROPOSED STORM STRUCTURE
- SOIL BORING LOCATIONS
- TREE REMOVAL

GENERAL CONSTRUCTION NOTES

- RESTORE ALL POND EDGES AND WOODED AREAS WITH TYPE 33-261 SEED (35 LBS/AC), FERTILIZER TYPE 4 (150 LBS/ACRE), AND COVER CROP SEED MIX 21-111 (100 LBS/ACRE). CATEGORY 20 ROLLED EROSION PREVENTION PRODUCT WITH NATURAL NETTING SHALL BE INSTALLED ALONG POND EDGES, BUFFERS, AND NON-MOWABLE SLOPES AS DIRECTED BY THE ENGINEER IN THE FIELD. TEMPORARY STABILIZATION: TYPE 3 MULCH WITH DISC ANCHOR.
- IN THE EVENT THAT RESTORATION CANNOT BE IMPLEMENTED WITHIN 7 DAYS AFTER CONSTRUCTION ACTIVITY IN THE DISTURBED AREA HAS CEASED, TEMPORARY EROSION STABILIZATION BMPs MUST BE SCHEDULED TO OCCUR WITHIN THAT 7 DAY TIME FRAME AND ARE INCIDENTAL TO THE COST.
- CONTRACTOR RESPONSIBLE FOR THE DAMAGE TO STREETS, CONCRETE CURB AND GUTTER, SIDEWALKS, AND DRIVEWAYS.
- DAILY STREET SWEEPING REQUIRED DURING HAULING OPERATIONS (INCIDENTAL TO MOBILIZATION) AND AS DIRECTED BY THE ENGINEER.
- DEWATERING/DEICING TO TAKE PLACE PRIOR TO EXCAVATION. ICE IS TO BE STOCKPILED ON SITE AND PUT BACK IN POND FOLLOWING THE EXCAVATION. DEWATERING PLANS MUST BE DEVELOPED IN ACCORDANCE WITH SWPPP GUIDELINES AND IS INCIDENTAL TO THE COST.
- CONTRACTOR SHALL PERFORM ALL DEWATERING AND EXCAVATION ONSITE AND OFF OF ROADWAY, AND LOAD AND HAUL OUT USING ACCESS ROUTE.
- CONTRACTOR TO GRADE AROUND EXISTING STORM SEWER STRUCTURES AS DIRECTED BY THE ENGINEER.
- CONTRACTOR TO COORDINATE ACCESS LIMITS WITH THE ENGINEER IN THE FIELD. CONTRACTOR SHALL ONLY REMOVE TREES AS MARKED ON PLANS AND APPROVED BY THE ENGINEER IN THE FIELD.
- EXISTING POND CONTOURS DEVELOPED FROM PRE-DESIGN SURVEY.
- MANAGEMENT LEVEL 2 INDICATES THAT SEDIMENT IS REGULATED MATERIAL SUITABLE FOR INDUSTRIAL OR COMMERCIAL REUSE ONLY.

SCALE: AS SHOWN
PLAN BY: SML
DESIGN BY: LGR
CHECK BY: JHN

REVISIONS

NO.	DATE	DESCRIPTION

I HEREBY CERTIFY THAT THIS PLAN, SPECIFICATION, OR REPORT WAS PREPARED BY ME OR UNDER MY DIRECT SUPERVISION AND THAT I AM A DULY LICENSED PROFESSIONAL ENGINEER UNDER THE LAWS OF THE STATE OF MINNESOTA.

LAURA RESCORLA
DATE: 07-27-2023 LIC. NO. 58716

GRADING PLAN

19TH AVE & DUNKIRK LN POND IMPROVEMENTS CITY OF PLYMOUTH

CLIENT PROJECT NO.
WR190001

WSB PROJECT NO.
022133-000

SHEET

4 OF 4